

# INTEX® OWNER'S MANUAL

## QuickFill™ Electric Air Pump

### Model AP634 12V 32W

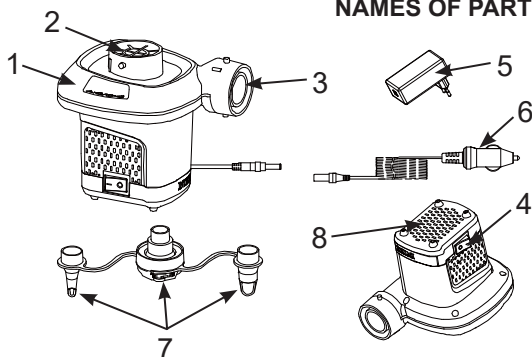
READ AND FOLLOW ALL INSTRUCTIONS BEFORE USING THIS PRODUCT

## WARNING

- Adult use only.
- Do not drop unit into water or expose unit to rain or water.
- Do not direct air stream at face or body.
- Do not operate for more than 5 minutes at a time. Unplug and let cool at least 15 minutes.
- Unplug unit when not in use.
- Do not obstruct vent holes or open source.
- Do not insert objects into the inflation or deflation connector.
- The DC supply cord cannot be replaced. If the cord is damaged the appliance should be scrapped.
- To reduce the risk of electric shock, do not expose to rain. Store indoors.
- This appliance can be used by children aged from 8 years and above and persons with reduced physical, sensory or mental capabilities or lack of experience and knowledge if they have been given supervision or instruction concerning use of the appliance in a safe way and understand the hazards involved.
- Children shall not play with the appliance. Cleaning and user maintenance shall not be made by children without supervision.
- The appliance must only be supplied at safety extra low voltage corresponding to the marking on the appliance.
- The appliance is only to be used with the power supply unit provided with the appliance.
- Suitable for inflating air mats, airbeds, inflatable pools and inflatable toys only.

**FOLLOW THESE RULES AND ALL INSTRUCTIONS TO AVOID PROPERTY DAMAGE, ELECTRIC SHOCK, BURNS OR OTHER INJURY.**

### NAMES OF PARTS



### PARTS DESCRIPTION:

1. PUMP
2. DEFLATION CONNECTOR
3. INFLATION CONNECTOR
4. SWITCH
5. AC ADAPTER
6. DC CIGARETTE CORD
7. NOZZLES
8. VENT HOLES / SLOTS

NOTE: Drawings for illustration purpose only. Actual product may vary. Not to scale.

# SAVE THESE INSTRUCTIONS

## INSTRUCTIONS

### GENERAL

- Return pump and nozzles to package when not in use.
- No specific air pump maintenance is required.

### INFLATION

1. Attach nozzle to the inflation connector if necessary and hold pump against inflation valve on item to be inflated. See Fig (1).  
**NOTE:** Use the appropriate nozzle on small inflation valves as on small air mattresses, etc.
- 2.1. Connect the end of the pump line cord to the DC cigarette cord (6) first, then plug in the DC line cord into a car cigarette lighter outlet. See Fig (2.1).
- 2.2. Connect the end of the pump line cord to the AC adapter (5) first, then plug in the AC adapter into an AC electrical outlet. See Fig (2.2).
3. SWITCH ON: Press "I"; SWITCH OFF: Press "0". See Fig (3).

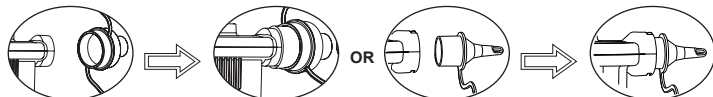


FIG (1): ATTACH NOZZLE

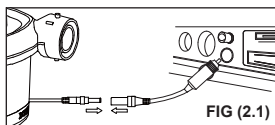


FIG (2.1)

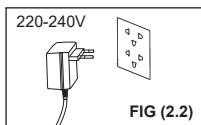


FIG (2.2)

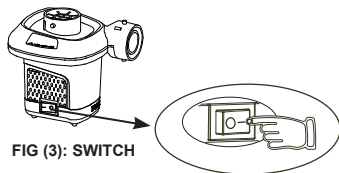


FIG (3): SWITCH

### DEFLATION

1. Attach nozzle to the deflation connector if necessary and hold pump against inflation valve on item to be deflated. See Fig (4).  
**NOTE:** On large items like inflatable boats and large air mattresses, the pump will fit directly into the inflation valves and provide faster deflation times. Use the appropriate nozzle on small inflation valves as on small air mattresses, etc.
- 2.1. Connect the end of the pump line cord to the DC cigarette cord (6) first, then plug in the DC line cord into a car cigarette lighter outlet. See Fig (2.1).
- 2.2. Connect the end of the pump line cord to the AC adapter (5) first, then plug in the AC adapter into an AC electrical outlet. See Fig (2.2).
3. SWITCH ON: Press "I"; SWITCH OFF: Press "0". See Fig (3).

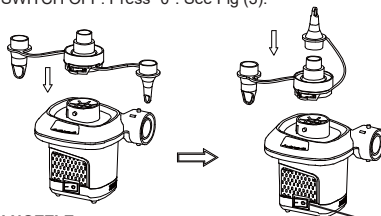


FIG (4): ATTACH NOZZLE

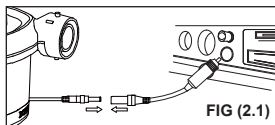


FIG (2.1)

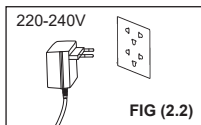


FIG (2.2)

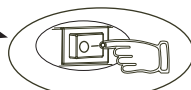


FIG (3): SWITCH

©2022 Intex Marketing Ltd. - Intex Development Co. Ltd. - Intex Recreation Corp. All rights reserved/Tous droits réservés/Todos los derechos reservados/Alle Rechte vorbehalten. Printed in China/Imprimé en Chine/Impreso en China/Gedruckt in China.  
 ®™ Trademarks used in some countries of the world under license from®™ Marques utilisées dans certains pays sous licence de/Marcas registradas utilizadas en algunos países del mundo bajo licencia de/Warenzeichen verwendet in einigen Ländern der Welt in Lizenz von/Intex Marketing Ltd. to/à/à an Intex Development Co. Ltd., Hong Kong & Intex Recreation Corp., P.O. Box 1440, Long Beach, CA 90801 • Distributed in the European Union by/ Distribué dans l'Union Européenne par/Distribuido en la Unión Europea por/Vertrieb in der Europäischen Union durch/Intex Trading B.V., Ettenseweg 46, 4706 PB Roosendaal - The Netherlands • Distributed in the UK by Unitex Service (UK) Limited, 21 Holborn Viaduct, London EC1A 2DY, UK.  
[www.intexcorp.com](http://www.intexcorp.com)

**INTEX®**

# SAVE THESE INSTRUCTIONS